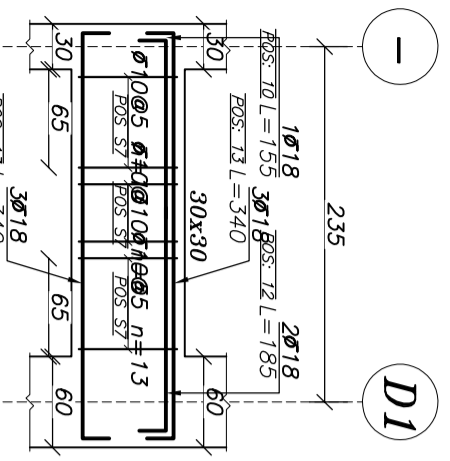


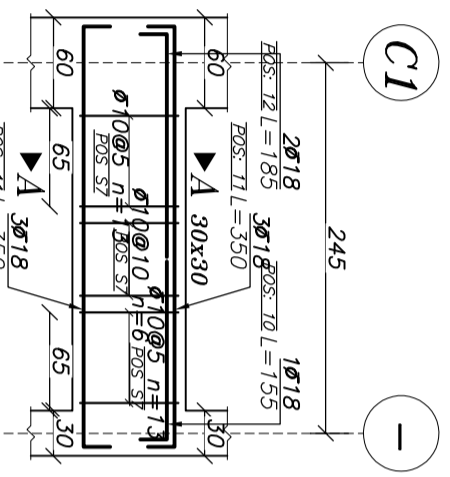
Framing Plan At Elev. +9.60

SC:1:100



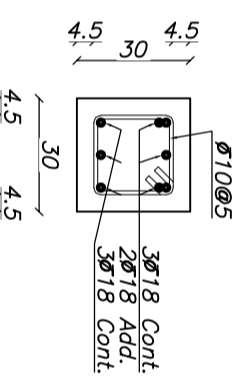
Beam Type B-1

Elev: 210, 697, 1152
H Scale 1:50
V Scale 1:20



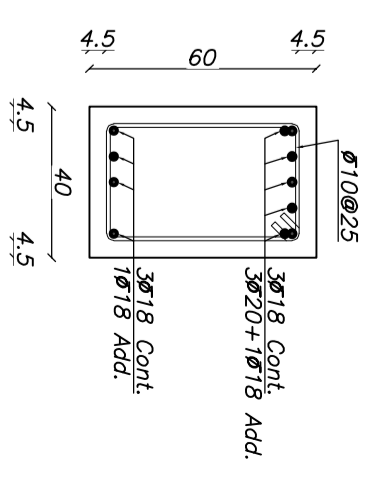
Beam Type B-18

Elev: 274, 761, 1216
H Scale 1:50
V Scale 1:20



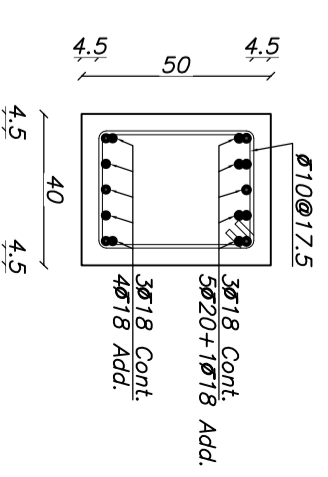
Sec. A-A

Scale 1:20



Sec. H-H

Scale 1:20



Sec. I-I

Scale 1:20